



PENSACOLA
STATE COLLEGE
FOUNDATION

FOUNDATION ^{FOR} A BRIGHTER FUTURE



2024 ANNUAL IMPACT REPORT

MISSION

The mission of the Pensacola State College Foundation is to change lives by providing students access to affordable, quality education and to support the growth and development of PSC, its faculty, staff, and campus facilities to enhance the College's impact in its surrounding communities.

VISION

The Pensacola State College Foundation transforms lives and builds futures through academic excellence created by honoring the intent of donors who invest in Pensacola State College.



The theme, layout, and design of this report were crafted by Pensacola State College alumna, scholarship recipient, and Graphic Design Specialist, Megan Rathmann.

TABLE OF CONTENTS

3	A Message from the PSC Foundation President and the Executive Director
4	PSC Foundation Board of Governors and The Association of Governors Emeriti
6	Staff
7	Endowed Teaching Chairs
8	Scholarships
13	Volunteers
14	Annual Events, Celebrations, and Special Announcements
18	The PSC Center for Nonprofit Excellence and Philanthropy
20	Employee Giving
21	Affinity Membership Groups
23	Donor Listing
30	Strategic Plan
31	Financial Overview



FROM US TO YOU, THANK YOU

A MESSAGE FROM THE PSC FOUNDATION PRESIDENT

In 2024, the Pensacola State College Foundation proudly laid the groundwork for a “Foundation for a Brighter Future.” On behalf of the entire Board of Governors, thank you for the generosity and trust that continue to fuel this vital mission.

This year, we welcomed five outstanding new members to the Board, broadening our community network and strengthening our leadership and vision. Thanks to donors like you, our year-end assets reached \$49,159,087, with new gifts to endowments increasing by an impressive 21.68% in 2024—a solid testament to your continued confidence in our shared work.

Because of this support, the Foundation was able to provide \$3,243,904 in programmatic assistance to PSC to empower students, enhance programs, and advance educational access across our region.

The impact is real. Every dollar invested helps PSC students gain the knowledge, skills, and confidence to lead in their communities and careers. Your belief in the PSC Foundation is the springboard accelerating the growth and capacity of future generations.

As we look ahead, we do so with purpose, passion, and partnership. Thank you for standing with us as we continue to build a stronger, brighter future for Pensacola State College.



Mike Morette
President, PSC Foundation

A HEARTFELT THANKS TO OUR PSC FAMILY

In 2024, we built a “Foundation for a Brighter Future.” Thanks to the generosity of donors, dedication of volunteers, and collaboration with key partners, we made lasting investments in PSC students, faculty, staff, and the greater community we serve.

It has been a privilege to stand beside the dedicated employees and board members of the PSC Foundation—champions who helped award privately funded teaching chairs to faculty whose passion drives student success. These investments shape lives, while scholarship donors open doors to new beginnings and life-changing journeys.

Our volunteers lit the way forward, grounded in a legacy of *trust*—earned by honoring each donor’s intent. PSC employees led by example, giving their time, expertise, and resources, showing deep belief in this institution and inspiring others to do the same.

We celebrated a milestone year, closing out 75 years of service with the launch of our inaugural “I am PSC” campaign—a bold expression of shared pride and commitment to the future.



Andrea Krieger
Executive Director, PSC Foundation

Whether you gave to scholarships, programs, faculty, or facilities, your support has strengthened the foundation of Pensacola State College. Because of you, the future is bright.

From the bottom of my heart—thank you for believing in our mission, our people, and our promise.



BOARD OF GOVERNORS & ASSOCIATION OF GOVERNORS EMERITI

EXECUTIVE BOARD



Mike Morette
President



**Jenn Kinego
Del Gallo**
Vice President



Tom Owens
Treasurer



**Chandra
Smiley**
Secretary



Trey Poirier
Past President



Lane Harper
Nominating Chair



Ed Fleming
Trustee Liason

BOARD OF GOVERNORS



Doug Bates



Jodi Bell



Jim Benson



Becca Boles



Ed Carson



**Christa
Childers Davis**



Mike Craney



Dick Dixon, Jr.



**Kendrick
Doidge**



**Nancy
Fetterman**



Hal George



**Carter
Herman**



**Sharon Hess
Herrick**



**Ashlee
Hofberger**



Tyler Kercher



Fallon Kurpuis



Pensacola State College Foundation Governors gave 1,354 hours in service during 2024. According to the Independent Sector, which currently values a volunteer hour at \$33.49, this equates to \$45,345.36 contributed through volunteer work alone. In addition, PSC Foundation Board members collectively donated and raised \$635,022.73 for the College.

BOARD OF GOVERNORS



Thomas Lampone



Kramer Litvak



Adrienne Maygarden



Will Moore



Alan Nickelsen



Bobby Potomski



Jo-Ann Price



Eric Randall



Jim Reeves



Betty Roberts



Kerry Anne Schultz-Battle



Charlie Sherrill, III



Bill Wein



Jessica Wimer



Colten Wright

THE ASSOCIATION OF GOVERNORS EMERITI



James Stolhanske
Chair



Miller Caldwell, Jr.



Carol Carlan



Bo Carter



Carolyn Davis



Donnie McMahon, III



Ed Moore



Margie Moore



Eric Nickelsen



Sandy Sansing



Marty Stanovich



Charlie Switzer



Tommy Tait



Mike Wiggins

Not Pictured:
Jim Hill
Wayne Peacock



PSC FOUNDATION STAFF



Andrea Krieger
Executive Director, Institutional Development
akrigger@pensacolastate.edu
(850) 484-1477



Laura Hill-Hanson
Director, Donor Relations
lhill@pensacolastate.edu
(850) 484-1564



Mikenzie Francis-Opperman
Director, Foundation Scholarships
mfrancis-opperman@pensacolastate.edu
(850) 484-1788



Mary-Cathryn Cavazos
Coordinator, Foundation Scholarships and Financial Aid
mcavazos@pensacolastate.edu
(850) 484-1665



Mina Colón
Director, Finance and Business Operations
mcolon@pensacolastate.edu
(850) 484-1233



Linda Kallok
Accounting Coordinator Accounts Payable
lkallok@pensacolastate.edu
(850) 484-1587



Cassie Redmyer
Director, Development and Major Gifts
credmyer@pensacolastate.edu
(850) 484-1193



Jashira Castro
Senior Executive Assistant
jcastro@pensacolastate.edu
(850) 484-1568



Kim Davis
Manager, Donor Database and Memberships
kdavis@pensacolastate.edu
(850) 484-2044



Briana Guimaraes
Administrative Assistant
bguimaraes@pensacolastate.edu
(850) 484-1560



Melissa Cole
Manager, Marketing and Communications
mecole@pensacolastate.edu
(850) 484-1567



ENHANCING ACADEMIC EXCELLENCE: ENDOWED TEACHING CHAIRS

Endowed chairs are special and prestigious academic appointments that are crucial to the recruitment of world-class faculty members to lead, mentor, and teach PSC students.

These funds allow the Institution to support exceptional educators by recognizing their expertise and providing additional resources for teaching and research.

Many of Pensacola State's endowed chairs are named in honor of alumni or influential figures in the field. This offers a way for donors to leave a legacy and make a lasting impact on education.

2024 ENDOWED TEACHING CHAIR RECIPIENTS



Kristen Regan
*Photography and
Art Professor*

*Anna Lamar Switzer
Endowed Teaching Chair*



Melissa Davis
*Assistant Professor and
Librarian*

*Charles A. Atwell
Endowed Chair for
Educational Leadership*



Don Lee
*Emergency Medical
Technician Professor*

*Margaret Moore
Nickelsen Endowed
Chair for Health
Sciences*



Sarah Meyer
*Veterinary Technician
Assistant Professor*

*Margaret Moore
Nickelsen Endowed
Chair for Health
Sciences*



Dr. Diane Jennette
*Nursing Assistant
Professor*

*Mary Ekdahl Smart
Endowed Chair for
Health Sciences*



Julie Watkins
*Pharmacy Technician
Assistant Professor*

*Mary Ekdahl Smart
Endowed Chair for
Health Sciences*



Amber Carey
*Humanities and Social
Sciences Professor*

*Sandra and Grover
Robinson III Endowed
Honors Chair*




**Dr. Vasanth
Ramachandran**
*Physical Sciences
Department Head*

*Tippett Family Endowed
Teaching Chair in
Science, Technology,
and Mathematics*

BY THE NUMBERS

 **8** Endowed Teaching Chair Awards were awarded to exceptional PSC faculty in 2024.

 The 2024 awardees have a combined total of **93 years** working at the College!

 The first endowed teaching chair was established in **1996**.

 There are **15** endowed teaching chairs at PSC.

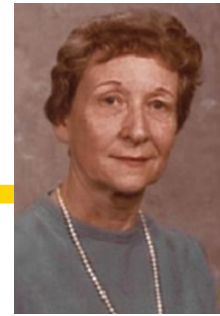


NEW SCHOLARSHIPS



ELAINE TRUSHEL NURSING ENDOWED SCHOLARSHIP

Elaine Akunevich Trushel served abroad in the U.S. Navy Nurse Corps during the Vietnam War. Later, she worked with the American Red Cross, where she met her future husband, Bill Trushel. Elaine passed away in 2005. In 2024, Bill chose to honor Elaine by establishing a nursing scholarship in her memory.




MARGARETTE S. BERRISFORD ENDOWED SCHOLARSHIP FOR WOMEN

Margarette Berrisford was the 13th employee hired at Pensacola Junior College and spent 40 years working at PJC. To support female students at the school she loved, Margarette generously chose to donate a portion of her estate to establish this scholarship. Margarette passed away in December of 2023 at 105 years young.




CARA MORRIS, MADISON BALES & STEFANIE SHADDOCK ENDOWED SCHOLARSHIP

PSC Foundation Fellow and Foundation Governor, James J. Reeves, Esq., established a scholarship to honor three key employees across his various businesses: Cara Morris, Chief Operations Officer for James J. Reeves and Subsidiaries; Madison Bales, Senior Executive Assistant at Reeves and Davis, Esq.; and Stefanie Shaddock, General Manager for Pensacola Beach RV Resort. This generous donor received an Alumni Association \$12,500 match to establish this endowed scholarship. 



VETERANS ENDOWED SCHOLARSHIP

Charles and Fran Switzer expanded their 50-year history of supporting Pensacola State by establishing the Veterans Endowed Scholarship. Both Navy veterans and longstanding PSC Alumni Association members, the two strive to support student veterans and their dependents. This generous donor received an Alumni Association \$12,500 match to establish this endowed scholarship. 



DID YOU KNOW?

Linking Industry to Nursing Education (LINE) funds strengthen connections between Florida College System institutions and community healthcare partners to combat the nursing shortage. Four PSC partners utilized the \$1 to \$1 State match to improve nursing students' access to programs, certifications, affordable tuition, and early workforce training via clinicals and mentorships.



HCA Florida West Hospital

HCA FLORIDA WEST HOSPITAL LINKING INDUSTRY TO NURSING EDUCATION (LINE) SCHOLARSHIP

HCA Florida West Hospital first donated to PSC in 1999. Some of its notable contributions include helping fund the Warrington Health Sciences Campus, establishing a Nurse Explorer Bootcamp, and providing leadership service on the PSC District Board of Trustees, PSC Foundation Board, and the Nursing Advisory Council.



Ascension Sacred Heart

ASCENSION SACRED HEART LINKING INDUSTRY TO NURSING EDUCATION (LINE) SCHOLARSHIP

Ascension Sacred Heart first donated to PSC in 1986. Some of its notable contributions include helping develop the Warrington Health Sciences Campus, establishing the Ascension Sacred Heart Allied Health Profession Scholarship, and providing leadership service through shared board participation at both institutions.



community health northwest florida

COMMUNITY HEALTH NORTHWEST FLORIDA LINKING INDUSTRY TO NURSING EDUCATION (LINE) SCHOLARSHIP

Community Health Northwest Florida first donated to PSC in 2019. Some of its notable contributions include the Community Health Northwest Florida Allied Health Profession Scholarship; administering free vaccines to students, faculty, and staff at PSC; and leadership service on the PSC Foundation Board of Governors.

Santa Rosa MEDICAL CENTER

SANTA ROSA MEDICAL CENTER LINKING INDUSTRY TO NURSING EDUCATION (LINE) SCHOLARSHIP

Santa Rosa Medical Center first donated to PSC in 1988. Some of its notable contributions include financial support for the Warrington Health Sciences Campus and leadership service on the PSC Nursing Advisory Council.



NEW SCHOLARSHIPS



ROB AND NIKKI BELL ENDOWED SCHOLARSHIP

Robert Bell, Senior Advisor, Asset Manager, and Co-Founder of Bellcore Commercial and Nikki Bell, CFO of Morette Company have strong ties to Pensacola State College. Nikki was a dual enrollment student and has served on the Holiday Experience committee, her mother is an alumna and former instructor, and her brother is the President of the Foundation Board. The Rob and Nikki Bell Endowed Scholarship, funded by Rob's donated commissions from a property sale, continues this legacy by supporting students indefinitely.



O'CONNOR FAMILY ENDOWED SCHOLARSHIP

Owners of several local McDonald's, John and Susan O'Connor strive to return the generosity that helped them through their humble beginnings. Through service on PSC boards and countless donations, the O'Connor family has invested in PSC for over 25 years. John and Susan's legacy of leadership and charity extends through their daughter, Jessica, and her husband, John Wimer. Jessica presently serves on the PSC Foundation Board of Governors and marketing committee. This scholarship symbolizes the family's commitment to serving others.



KINEGO DEL GALLO FAMILY ENDOWED SCHOLARSHIP

The Kinego Del Gallo family has supported the College through the first Capital Campaign, classroom presentations, service on the PSC Foundation Board of Governors, the Change Makers movement, and donations/community service to various PSC programs. They established the Kinego Del Gallo Family Endowed Scholarship as part of the inaugural "I am PSC" campaign.



WILLIAM J. TRUSHEL VETERINARY TECHNOLOGY ENDOWED SCHOLARSHIP

PJC alumnus Bill Trushel has served Northwest Florida for years as a law enforcement officer and later as a volunteer with the American Red Cross, Search and Rescue, and Fire Department. Inspired by a tour of PSC's Warrington campus and a love of animals, Trushel expanded his support with a full-ride scholarship for PSC veterinary technology students.






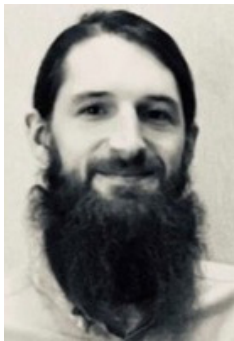
JERRY H. SANSOM ENDOWED SCHOLARSHIP FOR MARINE SCIENCES

Jerry Sansom, a PJC alumnus, skilled fisherman, and government affairs consultant, mediated legislative debates on sustainable fishing in Florida. His work earned him the National Fisherman's Magazine Highliner distinction before his unexpected death in 2024. His wife and fellow PSC graduate, Dixie, along with family and friends, established this scholarship to honor Jerry's legacy.




CAROL CARLAN LEGACY LEADERSHIP ENDOWED SCHOLARSHIP

Carol Carlan ended her banking career as the first female president of a large regional bank. Her community service spans over 35 nonprofits. She was President of the Ascension Sacred Heart Foundation, and is Director of Philanthropy at the Institute for Human and Machine Cognition, and CEO of Carlan Consulting. She is a PSC alumna, Board member of the Alumni Association, past president-emeritus of the PSC Foundation, former Guild Member, and PSC Foundation Governor Emeritus. Carlan recently retired from the PSC District Board of Trustees, earning the title of longest-serving esteemed member. This generous donor received an Alumni Association \$12,500 match to establish this endowed scholarship. 



CLEVELAND KENNEDY FOUNTAIN MEMORIAL ENDOWED SCHOLARSHIP

A PSC graduate, Cleaveland Kennedy Fountain was known as a skilled mechanic with nearly all Chrysler Corporation certifications, a music lover, an engaging conversationalist, a generous friend, and a loving companion to his girlfriend, Barri, and their two cats. Dr. Rick Fountain established this scholarship in loving memory of his son, Cleaveland, who passed away unexpectedly in November 2021. The Fountain family also donated many of Cleaveland's tools to PSC workforce development programs, providing future generations with the opportunity to learn in the field Cleaveland loved. This generous donor received an Alumni Association \$12,500 match to establish this endowed scholarship. 



Endowed scholarships with this icon indicate the donor received a \$12,500 match from the PSC Alumni Association upon establishment of their endowed scholarship.



Endowed scholarships with this icon indicate the donor received a \$10,000 match from the PSC Foundation upon establishment of their endowed scholarship during the College's "I am PSC" campaign.

SCHOLARSHIPS LIGHT THE WAY

In the last 4 years, **66** new scholarships were established, bringing the total scholarships at the PSC Foundation to **290!** During this time, **\$4M** helped support more than **3,700** PSC students, thanks to the support of **1,000** generous scholarship donors.



VOLUNTEERS

Beyond the Pensacola State College Foundation Board of Governors, the PSC Foundation was supported by **116** unique volunteers who gave a cumulative **979** hours of service in 2024. This equals **\$30,948** in labor value as assessed by the Independent Sector. We are beyond grateful for our wonderful volunteers!



WITH GRATITUDE: A TRANSFORMATIVE GIFT FOR AVIATION MECHANICS EDUCATION

Pensacola State College extends its heartfelt appreciation to Don Bishop, President and CEO of InDyne, Inc. and Chairman and CEO of Reliance Test & Technology, for his extraordinary donation of a Fairchild Merlin IV-C Metroliner aircraft, appraised at \$900,000. This generous gift provides PSC's Aviation Airframe and Power Plant Mechanics Program with an invaluable training asset that will enrich student learning for years to come.

"This aircraft will give students access to aircraft maintenance logs and training opportunities unlike those seen in traditional college programs," said PSC President Ed Meadows. "The PSC family thanks you for your generous gift. It will help students build the confidence and skills needed to pursue a gratifying, high-wage career."

Mr. Bishop shared, "We are very pleased to provide the Metroliner to Pensacola State College for the benefit of the students and the community."

This visionary gift complements a public-private partnership that includes ST Engineering, Triumph Gulf Coast, the City of Pensacola, and Santa Rosa County Economic Development. Andrea Krieger, PSC Executive Director of Institutional Development, added, "Don Bishop's authentic excitement and desire to help aspiring aviation mechanics is admirable."

Thank you, Mr. Bishop, for elevating education and opportunity at PSC.



18TH ANNUAL BIG BREAK GOLF CLASSIC

PRESENTED BY D.R. HORTON



The 18th Annual Big Break Golf Tournament, led by Chair Sharon Hess Herrick, teed off May 2nd at Stonebrook Golf Club with a sold out event. Thanks to the generosity of our sponsors and enthusiastic teams, over **\$40,000** was raised for the Fund for Excellence. Shoutout to our dedicated Big Break Committee, volunteers, and staff for making this event a resounding success—plus, the event celebrated its first-ever tournament Hole in One!

CONGRATS TO THE 2024 WINNERS

1ST PLACE

Florida Power & Light Company
Will Blankenship, Stephen Harris, Dalton Hastings, & Blake Russell

*First Place Team
Florida Power &
Light Company.*



2ND PLACE

LifeFlight 1
James Dowty, Braxton Hart, Colt Jones, & Randy Redmon

3RD PLACE

Raymond James at Gulf Winds
Lee Ann Allen, Emily Dykes, David Feliciano, & Jarell Flanders



GRAZE, GRAPES, & GRAINS

For over 15 years, Pensacola State College President's Circle donors have gathered for an annual reception to celebrate their generosity. Donors who contribute \$1,000 or more each year enjoy a culinary experience prepared by students of the PSC Molly McGuire School of Culinary Arts. The 2024 Graze, Grapes, & Grains offered an interactive experience with tasting stations hosted by A Curious Wine Shop and Old Hickory Whiskey Bar. Guests sampled wines and champagnes curated by Hilary and John Towns, and enjoyed a selection of American and Irish whiskeys presented by Tony Garrett and Tucker O'Connor.

First place student chef, Rayshawn Stallings, poses with PSC Chefs David Langham, Joni Hoang, and Tatyana Hulsey (L to R).



The evening concluded with a student chef competition, where twelve culinary students competed for cash prizes. Donors judged based on theme, taste, and presentation, actively supporting the next generation of culinary professionals. This event highlights the vital role of PSC donors in shaping students' futures.



16TH ANNUAL DAY OF CLAYS

PRESENTED BY TRANE

The Annual Day of Clays is more than just a sporting event; it's a community-driven celebration of education and opportunity! Since its launch in 2009, this event has raised over **\$1 million** in support of PSC students, with every dollar going to the Fund for Excellence: ensuring high-quality, accessible education for all.

In 2024, the incredible **\$172,000** raised shattered expectations! The generosity, dedication, and support from our sponsors, volunteers, donors, and participants are truly life-changing for our students. We are deeply grateful to everyone who played a role in this success.



Morette and TRANE Company representatives get ready for a day of shooting clays.

CONGRATS TO THE 2024 WINNERS

OVERALL SHOOTERS (NO MULLIGANS)

Mike Solliday (Green Course), Mike Morette & Jerry Moore (Red Course)

MEN'S OVERALL

Mike Solliday (Green Course) & Ryan Hatler (Red Course)

WOMEN'S OVERALL

Fallon Kurpuis (Green Course)

JUNIOR OVERALL

Kyle Galloway (Green Course)

TEAM OVERALL: GREEN COURSE

1ST PLACE: Ready Mix USA | 2ND PLACE: KHA Civil Engineers | 3RD PLACE: Waldorff Insurance & Bonding

TEAM OVERALL: RED COURSE

1ST PLACE: Hanssen Glass | 2ND PLACE: Bill Smith Electric | 3RD PLACE: Baptist Team #2



Mike Solliday of Team Ready Mix USA claims his Overall Shooter prize for the Green Course.



(L to R) Brad Calhoun, James "Rock" Rockhill, Jessica Rockhill, and Pat Delcher of Team Rockhill Aviation geared up to tackle the clay shoot challenge!



"I AM PSC" CELEBRATION

PRESENTED BY JO-ANN AND MICHAEL PRICE



The "I am PSC" Campaign was a resounding success, raising **\$137,598**; far surpassing its \$75,000 goal. Thanks to generous donors and matching funds from the Fund for Excellence, the Campaign established **three** new endowed scholarships, contributed **\$10,000** each to seven existing scholarships, and added **\$21,000** to the Universal Scholarship.

Former College Trustee and Foundation Board Member, John O'Connor, recalled witnessing PSC's transformation from Pensacola Junior College to a state college—a milestone he described as transformative for the region. "When I became involved with Pensacola State, I realized the value of the College in the community," he shared, expressing pride in his continued education.

The College's 75-year legacy was on display through a scrolling timeline, showcasing its deep community involvement and the contributions of those who have helped expand academic programs and workforce initiatives.

PSC President Ed Meadows emphasized the power of collective giving saying, "This is a night to honor those who have supported our College."



Former PSC President, Dr. Tom Delaino, is a proud part of the "I am PSC" Campaign.



"I am PSC" presenting sponsors Jo-Ann and Michael Price.

PSC CENTER FOR NONPROFIT EXCELLENCE AND PHILANTHROPY



In 2024, The PSC Center for Nonprofit Excellence and Philanthropy supported the training and education of nonprofit professionals, community leaders, volunteers, and board members across Florida, Alabama, Texas, and Ohio.

INAUGURAL CERTIFICATION CLASS

Achieve Escambia
 AMR at Pensacola, Inc.
 Autism Pensacola
 Big Brothers Big Sisters of NWFL
 Blues Angel Music Foundation
 Bright Bridge Ministries
 Center for Civic Engagement
 Center for Independent Living of NWFL

Chain Reaction
 Dixon School of Arts & Sciences
 East Hill Neighborhood Association
 Florida Innovation Collaborative
 Gulf Coast Kid's House
 Independence for the Blind
 Manna Food Bank
 Pensacola Alumni Charity Foundation

Pensacola Humane Society
 Pensapreneurkids
 ReadyKids!
 Studer Community Institute
 Transitioning Thru Trauma to Triumph
 United Ministries

NONPROFIT ATTENDEES

ADCserves, LLC
 Arc Gateway
 Ascension Sacred Heart
 The Asta Group
 Baptist Health Care Pensacola
 Build a Brain
 Cantonment Improvement Committee
 Center for Sacred Space
 Chappie James Museum
 Children's Home Society
 Claiming America, LLC
 Council on Aging of West Florida
 Crowned for Ashes
 Dog-Harmony
 Dogwood Acres Retreat Center
 Epps Christian Center
 Equity Project Alliance

Emerald Coast Wildlife Refuge
 Esperanza, Inc.
 Family Promise of Escambia
 Feeding the Gulf Coast
 The Girl Force Movement
 Glenwood Cemetery
 Grant Our Community
 Greater Pensacola Figure Skating
 Gulf Winds Credit Union
 Jayla's Voice; Echoes of Addiction
 Junior League of Pensacola
 Legal Services of North Florida, Inc.
 LifeView Group
 Nat'l Association of Latin Builders & Contractors
 Navy Federal Credit Union
 The Pack Youth

Panhandle Book Club
 Pensacola Opera
 Pine Forest Archery Club
 Ronald McDonald House of NWFL
 The Secret Place
 Seniors Power Up!
 Sisters Anointed to Lead Together
 Storytelling Solutions of America
 Total Maintenance Group of NWFL
 United Way Emerald Coast
 United Way of West Florida
 University of West Florida
 Valerie's House
 Waterfront Rescue Mission
 WSRE
 4EVR DEZ
 90Works, Inc.



PSC CENTER
 FOR NONPROFIT
 EXCELLENCE
 AND PHILANTHROPY
 2024
 STATISTICS



VOLUNTEER TRAINERS, PANELISTS, MENTORS, GRADERS, & MORE

Aaron McCurdy
 Adrienne Maygarden
 Allison Hill
 Amanda Hindsman
 Amber Southard
 Amy Bender
 Amy Newburn
 Amy Piedmont
 Andrea Krieger
 Asher Kelly
 Becca Boles
 Betty Barnard
 Bill Pearson
 Bob Stanton
 Brent Lane
 Brent Thomas
 Bryan McCall
 Chandra Smiley
 Charlie Sherrill, III
 Chris Kelly
 Christa Childers Davis
 Claire Stewart
 Dana Goss
 Dane MacKendrick
 Debbie Calder
 Debbie Ritchie
 Dede Flounlacker
 Devin Simmons

Dolly Sandoval
 Doug Bizerra
 Emily Kosan
 Emily Spears
 GinNeal McVay
 Glenn Lovett
 Grover Robinson, IV
 Jackie Gheen
 Jacquelyn Buss
 Jennifer McFarren
 Joe Barzacchini
 Jo-Ann Price
 Jodi Bell
 John Panyko
 Josh Newby
 J.T. Young
 Dr. Judy Bense
 Kateri Vaclavik
 Kathleen King
 Katie White
 Kendrick Doidge
 Kerry Anne Schultz-Battle
 Kim Davis
 Kristin Fairchild
 Kristin Longley
 Dr. Kylie Henderson
 Laura Hill-Hanson
 Leah Harrison

Lori Storey
 Lynne Cunningham
 Lynne Randall
 Mark Hemby
 Mary Claire Walther
 Melissa Mott
 Melissa (Missy) Rogers
 Meri Asmar
 Michelle Buchanan
 Mike Craney
 Mikenzie Francis-Opperman
 Mina Colón
 Paula Shell
 Rachael Gilmer
 Rebecca Mosley
 Rhett Williams
 Robert Overton
 Rusty Branch
 Sarah Horne
 Stacey Kostevicki
 Summer Jimmerson
 Todd Thomson
 Tom Owens
 Victor Brooks
 William Butcher
 Will Moore
 Zitlaly Valenzuela Jiminez

WE'RE GRATEFUL FOR OUR 2024 PROGRAM PARTNERS!



PSC CENTER FOR NONPROFIT EXCELLENCE ADVISORY COUNCIL



Stacey
 Kostevicki
 Chair



Jodi Bell



Becca Boles



Christa
 Childers Davis



Mike Craney



Kendrick
 Doidge



Kristin
 Fairchild



Dede
 Flounlacker



Dana Goss



Chris Kelly



Jennifer
 McFarren



Melissa Mott



Lori Storey





EMPLOYEE GIVING

The 2024 Employee Sip, Savor & Support Event made waves, raising an incredible \$6,500 to strengthen PSC Affinity Membership Groups, Departmental Programs, Scholarships, the Association of Florida Colleges (AFC), and the Fund for Excellence! Thirty employees were inspired to join their peers in supporting Pensacola State College.

Colleagues mingled together in the sun-soaked vibes, indulging in a Margaritaville-inspired feast expertly crafted by students of the Molly McGuire School of Culinary Arts. With great food, great company, and a shared passion for giving, this event was a joyful success!



"I choose to give because I know even a little goes a long way in helping support those who need it, and I want to see our programs continuously thrive. That is why I give in many ways, not just with charitable contributions but by attending exhibits hosted by the Visual Arts department and purchasing to-go meals from our Culinary Arts program. If you can't contribute monetary value, it's as simple as showing up to support events hosted by any of the wonderful programs available at PSC."

- Sam Smith, PSC Employee and Alumna

PENSACOLA STATE COLLEGE
FACULTY AND
STAFF GIVING
2024





ATHLETIC PIRATE CLUB

In 2024, the PSC Athletic Pirate Club received **\$67,743** in donations. This support is instrumental in providing resources for the **152 student-athletes** to excel both on and off the field. Both Women's Volleyball and Women's Soccer made national appearances, with Women's Volleyball taking home the tournament championship for the **2nd year in a row** and Women's Soccer taking it home during their **1st year**. Men's Baseball saw two of its players go on to represent Team USA in the NJCAA, placing **2nd** after Japan. Finally, PSC Athletics welcomed the Champions Club, a brand-new Weight Room and Volleyball Locker Room, and broke ground on a Women's Soccer Field.



Team USA players Blaydon Plain (L) and Michael Young (R) hold the 2nd place NJCAA trophy.

All About Athletics

- PSC Athletics hosts eight competitive teams: Men's Basketball, eSports, Women's Basketball, Women's Cross Country, Women's Softball, Men's Baseball, Women's Soccer, and Women's Volleyball.
- Students Catie Woolf, Maddie Goodwin, and Riley Carter were selected for Women's Volleyball's All-Tournament team in addition to player Maddie Mire who was selected for All-Tournament and as Most Outstanding Player.

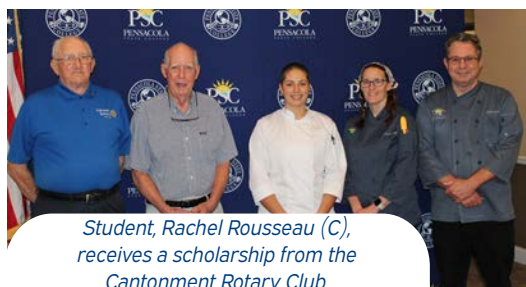


Learn more about the Athletic Pirate Club



FRIENDS OF CULINARY ARTS

Last year, the Molly McGuire School of Culinary Arts received **\$11,242** in donations through the Friends of Culinary Arts. These generous donations directly benefited PSC culinary students, helping secure a **new stove** and **refrigerator** for their kitchen. Impressively, these hardworking students served **nearly 400 guests** across a variety of events and meal series in 2024.



Student, Rachel Rousseau (C), receives a scholarship from the Cantonment Rotary Club.

Culinary Celebrations

- Culinary graduate, Luther Scott, established a collaboration with the newly launched "Gather, A Culinary Collective" to introduce lunch and dinner meals at its rotating-chef concept kitchen.
- Last February, culinary students prepared Mardi Gras-themed sweet treats to serve to PSC students in celebration of National Career and Technical Education (CTE) Month.



Learn more about the Friends of Culinary Arts





FRIENDS OF PERFORMING ARTS

In 2024, the Friends of Performing Arts received **\$6,106** in donations. Support from Friends of Performing Arts members empowers students to refine their craft and pursue their passion. Last year, **12** talented performing arts students were named to the Florida College System Activities Association (FCSAA) All Academic Team. The Department of Performing Arts, in partnership with PSC's Lyceum Series and area arts organizations, finished a jam-packed year, hosting **46** events with a total of **12,897** attendees.



Performing with Pride

- Freshman percussionist, Patrick Bonifay, won a position with the United States Marine Band.
- Performing Arts hosted a variety of renowned musical talents last year, including Broadway performer, Stephanie Torns; Adonis Rose and the New Orleans Jazz Orchestra 7; and international concert pianist, Thomas Pandolfi.



[Learn more about the Friends of Performing Arts](#)



ANNA SOCIETY FOR VISUAL ARTS

Last year, the Anna Society for Visual Arts received **\$6,763** in donations. These donations help equip students with cutting-edge resources and inspiring spaces. PSC Visual Arts hosted **15** exhibitions, events, and visiting artist lectures in 2024. Visual arts students brought home **18** Gold and **39** Silver awards at the American Advertising (ADDY) Awards. Lastly, **7** pieces of donated artwork were entered into the PSC Permanent Collection.



Artistic Accomplishments

- At the Annual Student Art Awards Exhibition, student, Sydni Hutchens, was selected as the President's Choice award winner for her piece "Melting Solitude."
- Ceramics instructor, Micah Cain, and 16 students created 135 bowls for Manna's 2024 Clover Pick A Bowl Fill A Bowl event.



[Learn more about the Anna Society for Visual Arts](#)



SHINING LIGHT ON OUR 2024 DONORS



\$100,000 AND ABOVE

Don and Janie Bishop
Florida Blue Foundation

McGuire's Irish Pub
William Trushel

\$50,000 TO \$99,999

Janice and Ron Miller

Pensacola Sports

\$10,000 TO \$49,999

Alfred I. duPont Foundation, Inc.
The Ambersley Foundation
Ascension Sacred Heart
Bank of America Charitable Foundation
Bear Family Foundation/
The Lewis Bear Company
Rob and Nikki Bell
Carol Carlan
Community Health Northwest Florida
Cas and Anne Dunlap
Law Offices of Richard M. Fountain PA/
Rick and Margot Fountain/Estate of
Cleaveland Kennedy Fountain
The Florida College System Foundation
Florida Power and Light Foundation
L3Harris Foundation, Inc. Matching Gift/
Dr. John Gallo and
Mrs. Vivian Menge Gallo
HCA Florida West Hospital

James J. Reeves Attorney at Law/
Pensacola Beach RV Resort LLC
Loyalty Credit Union
Margarette S. Berrisford Trust
Dr. Marjan Mazza
Donald and Rosemarie McMahon
D.W. McMillan Trust
Margie and Alan Moore
Morette Company/
Mike and Laura Rae Morette
Sharon Morette
O'Connor Management Group/
John and Susan O'Connor
Price Family Private Foundation/
Jo-Ann and Michael Price
Sandy Sansing Family
Santa Rosa Medical Center
Schultz Law Group, P.L.L.C./
Kerry Anne Schultz and Paul Battle

Wendell and Beth Smith
Southern Pine Inspection Bureau
Synovus/Synovus Trust Co., N.A.,
Foundation & Endowment Services
Theresa Gail May Scholarship
Foundation
Trane Technologies
Truist Contribution Committee
Walmart #919, #1222, #1224, #1605,
#2533, #3785, #4582, #5623, #5653,
#5771

\$7,500 TO \$9,999

Ed and Kitty Meadows
Jason Moore

Navy Federal Credit Union
PenAir Credit Union

Dixie N. Sansom

\$5,000 TO \$7,499

Ray and Carol Ascherfeld
Bear General Contractors
Gary and Glen Boutwell
Bradley Masonry, Inc./
Jimmy and Lisa Bradley
Cantonment Rotary Club
D.R. Horton, Inc.

Kim and Judy Davis
Hanto & Clarke General Contractors
Information Technology Association
of the Gulf Coast, Inc.
Joe and Bev Kinego
PACE - FL - PLLC
Palafox Ventures, LLC

Pensacola Ice Flyers
Pete Moore Chevrolet
Maria A. Sakellariou and
Scott A. Thompson
Smith Tractor Company, Inc./
Ricky and Kimberly Smith



\$2,500 TO \$4,999

A. Barter Consulting, LLC
Ace Unlocks/Chris Roney
ACS Coatings, Inc.
AMA Lighting
Scott Andresen
Anton Lee Engineering, LLC
Arcadia ICR Group, LLC/Todd Alford
Baptist Health Care/Baptist Health Care Foundation
Christine M. Bridges
Edward and Cynthia Chadbourne
Dan Charbonnet
CPC Office Technologies
Harry and Gayle Cramer
Steve and Jenn Del Gallo
Gary A. DeLapp
Deborah L. Douma
Edwards Roofing Company, Inc.
Enterprise Mobility
Charles and Janice Fairchild
Myra Forester

Gerard Frank
Salomon-Goldstein Properties, LLC/
Gerry and Mitzi Goldstein
In Honor of Dr. James E. Grant
Hanssen Glass Company, Inc./Eric and Sheryl Hanssen
Jack and Linda Hawley
Vaughan Hedrick
Hewes and Company, LLC
Jerry Pate Design
Andrea Krieger
Kenneth Kulus
McKenzie Motors Buick GMC/
Lisa McKenzie Dampier
North Florida Surgery Center Foundation, Inc./
Drs. Tip & Ellen McKnight
Pete and Brenda Pena
Stephen and Traci Pitre
Raymond James at Gulf Winds
Rockhill Aviation

Jennifer and Scott Scherer
Kay Seligman Valentino & Bill Valentino Site and Utility, LLC
Sonny's BBQ
SouthState Bank
Mitzie Sowell
"Flash" Gordon Sprague
Phillip Turner and Julie Sheppard
Bob and Maria Warren
Stephen and Robin Whiting
Harry and Jill Wilder
Jarl ("J.T.") and Deidre L. Young ("Aspire Higher Scholarship")

\$1,000 TO \$2,499

A Chiropractic Tradition/
Dr. Edwin Roberts Sr.
Adam Homes
John Adams and Laura Magan
Aderholdt Building and Consulting, LLC
Aduddell Industries and Roofing, LLC
Alan C. McMillan & Associates LLC/
Alan and Gloria McMillan
Alesia E. Andry
Ricky Armstrong
Aston Health
Bryan and Lisa Aylstock
Sharon Baggott Westmoreland,
Karol and Albert J. Baggott, Jr.
Tyler Barrett
Doug and Lisa Bates
Lewis and Jennifer Bear
Keith Beck
Bell Steel Company
Jim and Terry Benson
Calvin Bentley Charitable Trust Foundation
Bill Smith Electric, Inc.
Vic and Paige Bindi
John and Judith Blackman
BrightView Landscaping
Broker's Unlimited
Joanne L. Bujnoski and
Martin J. Kandes

Bullock Tice Associates, LLC,
a GHC Company
Steve and Janet Burch
Cadence Bank Mortgage
Caldwell Associates Architects, Inc.
Career Sources Escarosa
David Cobb
Coleman Orthopaedics
Craig Dalton
Carolyn R. Davis
Deep South Crane, Inc.
Dick and MaryEllen Dixon
Beverly Donahue
Rob and Christina Doss
Peter and Libby Doyle
Patricia Drlicka
East Hill Automotive
Albert Elebash
Shane Elkins
Rick and Christy Emmanuel
Emmanuel, Sheppard and Condon
Ted and Karla Ent
Earl Evans and Tania Leon
Pat Everly
The Family of PJC Professor
Gray Wright Waldorf
Fisher Cabinet Company, LLC
Five Flags Sertoma of Pensacola
Florida Architects, Inc./Joe & Valli Sorci

Jay and Carrie Galbraith
Peter Gilroy
Tom and Diane Goetter
Robert and Kathy Graydon
Rob Gregg
Gulf Coast Veterans Advocacy Council
Madeline Hafleigh
Sue Halfhill
Dick and Laura Hanson
Lane and Jill Harper
Kit Hatcher
Hatler Law/Ryan Hatler
Luke and Courtney Henderson
Ron and Dale Hensley
Sharon Hess Herrick and Doug Herrick/
Hess Realty Group/
SunFarm Solar Energy
HG Engineers
Highpointe Hotel Corporation/
Homewood Suites Airport, Hampton Inn Airport, Hilton Airport, Residence Inn Airport
Debra N. Hild and Greg M. Shoemaker
Brian Hilson
Robert Hines
Axel Hoewt
Mary and David Hoxeng
Harry Huelsbeck
IMEG Consultants Corp.



\$1,000 TO \$2,499 CONTINUED

IT Group
J. Green Construction Services, Inc.
Beth Jaworski
Richard and Carole Jenkins
Mr. Joseph R. John, III
Stephanie John
Michael Johnston
Houston Jones
Kathy Jones
Brenda K. Kelly
Kenneth Horne and Associates, Inc.
Richard and Shirley Knight
Fallon Kurpuis
William and Arielle Langhorne
Lanico, Inc.
Jason and Susan Lanning
Thomas Lark
Rameca Vincent Leary
Bryan and Emily Lewallyn
Dennis and Kathryn Lewallyn
Lisa York Law, LLC
Mike and Lynsey Listau
Hailey Lotz
Lunsford Air Conditioning & Heating
Chris Lunsford
Erin McColskey
MidSouth Bank
Ray Milam
Mike Miller
Minds on Music, LLC
Monarch Aviation, Inc./Carl Everitt
Edward Moore
Will and Cayla Moore
Nelson Plumbing
Newcomers Club of Greater Pensacola
Sheila and Vaughn Nichols
Eden Nitcher
W.J. & Jane C. Noonan Charitable Trust
Sean and Jennifer O'Brien
One Savior For You Ministries, Inc.

Organized Fishermen of Florida
Outerspaces Landscaping
Dr. and Mrs. Brett L. Parra
Pediatric Dentists, APDC
Pensacola Electric Company, LLC
Betty Gail and Denny Peters
John T. Pierce, III
Trey and Claire Poirier
Henry and Carmela Porter
Bobby and Hong Potomski
Power and Controls Technology, Inc.
Eric and Barbara Randall
Range Window and Door
Ready Mix, USA CEMEX
Reeder Financial Group/New York Life
REW Materials
Jim Rhodes
RJ Young
Clyde Roark
Betty Roberts
Jill and Grover C. Robinson, IV
In Memory of Les Duell
Elizabeth Duell Rupp
Sacred Heart Radiation Oncology
Sam Marshall Architects/
Mike and Suzy Marshall
Scott A. Schackmann
Charles and Mallory Sherrill
Gus & Bianca Silivos/
Agapi Bistro and Garden
Simpco Services
Kelvin Singleton
Bill and Caroline Smith
Paul and Sherie Snider
Society of the Debutante
Charity Cotillion
Timothy Spears
Erin Spicer
Stevenson Klotz Injury Lawyers
Dee Strickland

JD Sullivan
David Sutton
Robert and Jane Switzer
The Wright Company
Mike and Patty Thomas
Laurilee Thompson
Troy and Diane Tippet
Sally and Henry Trimble
Tyler Kercher Insurance Agency/
Tyler and Audrey Kercher
United Bank
Barton Urnowey
Gene and Maureen Valentino
Van Horn Enterprises, LLC
Veterans National Homecare, Inc.
W.R. Taylor & Company
Waldorff Insurance and Bonding
Jeff and Sherri Weeks
Wharton-Smith, Inc.
Dennis White
WLES L.P.
William and Peggy Woolverton
Danny and Tonya Zimmern

\$500 TO \$999

Amore Plumbing Co, Inc.
The Andrews Institute
Bank of America Matching Gifts
Program/Margie and Alan Moore
William Batting
The Beasty Beta Omicron Chapter of
Omega Psi Phi Fraternity
Beggs and Lane
Gary and Carissa Bergosh
Bilco Builders

BJ's Restaurant, Inc.
Bloodline Fishing Charters
Betsy and Nathan Botts
Boyett's Portable Restrooms
Diane Bracken
In Honor of Anniece Addy Brooks
Jeanine Brown
Buffalo Rock Company/Pepsi Cola
C&D Electrical, Inc.
Carpet Creations of Florida, Inc.

The Family of Nancy Caudle
Dennis Chadbourne
Clark Partington Attorneys at Law
Victor and Mina Colón
Cornerstone Mortgage Solutions, LLC
Al and Kim Davis
Rebecca Deese
Charles and Barbara DeGrisky
John Dickson
Dogwood Garden Club of Gulf Breeze

\$500 TO \$999 CONTINUED

Timothy and Sandra Edwards
Jeannie Ephron
Eurofins Environment Testing
Ann Ferretti
Fisher Brown Bottrell Insurance
Cherry Fitch
Fly Fishing Pensacola
Shane Frederic
Friends of Bill Posey
Fusion Fine Wine and Spirits
Sean Gallagher
Gene's Floor Covering, Inc./
Kevin and Dusti Sluder
Robert Gill
Tom and Dena Gilliam
Marla G. Glover
Jerry Godwin
Phil and Misty Hiatt
Samantha and Danny Hill
Norman Hullinger
Interbay Building Services, Inc.
Ron and Margaret Jackson
Dr. and Mrs. J. Blaine John
Ken Griffin Landscape Contractors, Inc.
Key Insurance of Pensacola, Inc.
Pamela Killebrew
Michael S. Kohler

Vaidehi Kumar
Bill Lacy
David Langham
Roxanne Lavelle
Kramer and Jane Litvak
John Luetkemeyer, MD
Kimberly Markwick
Karen McCabe
Melonie Miner
Derek Nelms
Eric and Peg Nickelsen
Darren Nilsen
John Nilsen
Jean Norman
Elva Ostarly
Pace Water System, Inc.
Ray and Susan Palmer
Greg Payne
Kenneth and Elizabeth Phillips
Kathy Platt
Police Benevolent Association
Ms. Susan Ragan
Restaurant Iron
Brett Roney
Cheryl Saiter
Santa Rosa Shooting Center
Kevin Saucier

Patricia Selkirk
William C. Sheffield, LLC
John V. Shepard and James W. Batten
Wendy Spradlin
State Farm Companies Foundation
Matching Gift Program/Tyler
Kercher Insurance Company
Stirling Properties
Margaret and Harry Stopp
TC Insurance & Benefits/
Reid and Lindsey Torgersen
Hugh Turner
Milton and Dona Usry
The Vein Center of Florida
Eddie Warner
Larry and Nancy Warrenfeltz
Patrice Whitten
The Wide Angle Photo Club
John and Linda Williams
Pamela Williams
Scott Winn
John Woods

\$100 TO \$499

A Joyful Noise Music, Inc.
Acme Brick Tile and Stone
Chase Acton
Aetos
John and Brenda Akins
Brett Aldridge
Lee Ann Allen
ADK-Delta Iota Omega Chapter
Cookie Amoss
Chad and Mollie Andrae
Armstrong Electric Co., Inc.
William Arnold
Association of Florida Colleges
Pensacola Chapter
Jerry and Karla Atkins
Aurelius Golf
Robert and Andrea Bakker
Lisa Barall-Matt
Judy Barrett
Lisamarie Bartusik
Jeffery B. Bates
Genevieve Baughman
Bay Area ENT

Gary and Danise Beadle
Keith Beaubien
Joe D. Benson
Beré Jewelers
Sandra Berry
Blue Water of Pensacola, Inc.
Joel Boles
Samuel T. Bothwell
Carolyn Brabson
Lecia L. Bradley
Maria Brake
Breakthru Beverage
Mr. and Mrs. Brems
Isaac and LaRita Brigham
Carl and Johnnie Bright
Hattie Bright and Family
Tobi Brown
Antonio and Bree Bruni
John and Lynne Butcher
The Butcher Shoppe
Shirley Byran
JoAnn Byrge
Gwen Cadogan

Scott Canavello
Beth Ann Carbone
Steven Carbone
Ed and Kelly Carson
Jerome Carter
Kimberly Carter
Kari Casarietti
Jo'Ell Catel
James Cato
Marshall Caum
Mary-Cathryn Cavazos
Larry Chambers
Vanessa Chambers
Lisa Chiodi
Abner D. Clark
Michael H. Clarke
Mary Clyde
Coastal Machinery Company
Melissa Cole
David L. Collins
Committee to Protect Northwest Florida
Emilea Coons
Lionel and Madeline Cote



\$100 TO \$499 CONTINUED

John Cotton, Jr.
Melina Cox
Mike and Heidi Craney
Michael Crawford
Christine Cura
Brenda J. Czenz
Nix and Linnea Daniel
Danzy Developers
Maria Dargan
John and Joyce Darling
Buddy Davenport
Melissa Davis
Richard Davis
Sebastiane Davis
Tanya Davis
DBR Entertainment Productions LLC
Betty DeBrock
Brian DeBrock
Rafael Deliz
DG Marketing, LLC
Oley DiCenzo
David and Kristine Dickson
Deborah Dobbins
The Dogs Paw Grooming Salon LLC
Francesco V. Donato
Maureen Duignan
Jamie Dunn
Michelle Dunn
Carol H. Dupuis
Boots Eckert
EF Contract Flooring
Kristi J. Eidson
Daniel and Maggie Elebash
Christine Elliott
Stephanie Ellis
Bill Emerson
Kristy Fairburn
FastCash
Linda Feinberg
Jessica Ferris
Nancy Fetterman
Jorge and Brenda Figueroa
First Tee
The Fish House
Scott E. Fisk
Florida Historic Capitol Foundation
Matt Floyd
Tom Ford
Estelle Foust
Edith Fox
Mikenzie Francis-Opperman and
John Opperman
Helen P. Franta
Laura M. Fredrick

Mia Freymiller
Rodney Funderburk
Pati Gandolfo
Evelyn Garcia
Teresa J. Gassman
Demira Gatica
Sharon Gaubert
Rich and Jasmine Geraci
Tylon Gibbs
Christine Glaze
Carey Gleason
Todd Goodman
Allen Goodwin
Onesimus Gordon
Marcie Grace
Gray Boutique
Lisa J. Gray
Greater Mount Lily Baptist Church
Carol Greco
Maria Greene
Gulf Coast Kiln Walk Society, Inc.
Gina Hagerty
Hair Care by Mel, LLC
Andre Hall
Lance W. Hall
Keith and Jane Haney
Burt Hankins
Hanniton Watts American Legion
Post 193
Lillian Harding
The Harmon Murphy Group
Randall Harris
Jenica Harris
Katie Harris
Tiffany Harris
Laura Harrison
Crispin Hatcher
William Healey
Evan and Jena Helinski
Kylie Henderson
Tammy Henderson
Cindy Hendricks
Tony Hernandez
The Historic Cocoa Village Playhouse
Mamie Hixon
Bruce and Marion Hoffman
Fred Holt
Alexis Hooks
Albert and Jeanelle Hopkins
Charles Hopkins
Joyce Y. Hopson
Felix Hotard
Carlette Howell
Elizabeth Hund

Cecil and Carol Hurst
In Memory of Sharen Siefert
Christine Isham
Charles Isiminger
Ivanco, Inc.
Jaquita Jackson
Nan Jackson
Celeste Jackson-Lintz
Jazz Society of Pensacola, Inc.
Beverly Jenkins
Nancy Jenkins
Therese M. Jensen
Ken Jernigan
Jewelers Trade Shop
Tiffany D. Jocson
Alison John
James and Gloria Johns
Brent and Jomanda Johnson
Charles Johnson
Laura Johnson
Mike and Phyllis Johnson
Russell and Betsy Johnson
Willie and Sharon Johnson
Ava Jones and Larry Johnson
Cleta Jones
Jody Jones
JW Restaurant Group
Robert H. Kahn, Jr. Family Foundation
Linda L. Kallok
Nwobiara Kalu
Don Kent
KI Furniture
Kingdom Builders Christian Min.
Kimberly Knapp
Brian Koontz
William and Anita Kovacs
Vivian Krumel
Ron Kunkle
Britt and Nell Landrum, Jr.
William Lane
Erica Lanes
Janet Langdell
Joel and Jewell Levy
David R. Lewallyn
Kirsten Lewis
James Libbey
John Link
Deborah Linton
Michael Litchin
Jaaron Lombardi
Mary Mabins
Rev. and Mrs. Charles Maldon, Sr.
Wesley S. Malone
Summer Maples



\$100 TO \$499 CONTINUED

Kevin and Olivia Martin
Val Martinez
Matthew P. Massey
Louise Mayberry
Gerald McArthur, Sr.
Devodric C. McBride
Richard McClanahan
Gail McClure
William and Melinda McDaniel
Robin McDaniel
Wyatt McDaniel
Dawn McGee
Julie McGrath
Denis and Jordan McKinnon
Denis and Maureen McKinnon
Denis and Peri McKinnon
Margaret McKinnon
Scott McKinnon
Norris and Donna McMahan
Denise McNeff
Ralph and Vera Meacham
Britt Mead
James Megehee
Robert and Beverly Merrilees
Merrill - Leidner, Prim & Associates
Kristine Metcalf
Ron and Linda Midlam
Cheryl Miller-Chambers
David and Missy Mire
Mister Softee of Northwest Florida
Keyaundra Mobley
Peggy Moczulski
Mo'Money Associates, Inc.
Angela Moore
Briana Moore
Henry Morgan
Kenny Morgan and Martha Caughey
Sharon Morris
Brad Morrison
Darlene Mosley
Adam Motes
Matoteng and Cathy Ncube
Moeti Ncube
Sentibaleng and Kodra Ncube
La'Krystal Neal-Williams
Marge Negri
Jacob Newton
John Newton
Lisa Nguyen
Alan and Mollie Nickelsen
William Norwood
Jack Noyes
Tamara O'Donnell
Oops Alley Family Entertainment Center

Marisol Ortiz
Thomas Owens
Alvin Palmer
Panera Bread, LLC
Ginny Papizzo
Paradise Bar & Grill/Inn
Deborah Paschal
Melanie Passman
Josh Pavilando
Michael and Stephanie Payne
Philip M. Payne
Pensacola Association of Realtors, Inc.
Pensacola Legal Support Specialists
Association
Dale Perkins
Douglas Perry
Earl and Tracy Peyton
Phi Theta Kappa-Theta Chi Chapter
Jessica N. Phillips
The Estate of Helen Pierce
Carol Platt
Poeling Construction
Beau Pollard
Ralph and Sandra Poppell
Port Tampa Bay
William J. Posey
Kierra A. Potts
Leila Potts
Jim and Judy Prim
PTK Beta Beta Gamma
Publix
Amy L. Queret-Mitchell
Diana Quigley
R. Scott Holland Architect LLC
Dan J. Raab
William Radcliffe
Randall's Formal Wear
Kristen R. Regan-Miller
Teala Reguindin
Renasant Bank
Mary and Robert Riker
Thomas Riney, Jr.
Riverbend Townhomes HOA
Kayla Robbins-Milligan
Michael Robertson
Thomas Robinson
Roesle Sports Consulting
Lisa Roest
Marian Roest
Patrick and Ricky Rooney
Rotary Club of Pace
Michael Rowan
Jeremy Ruffin
Debra Ryals

Christy Saiz
Sam's Club #6361
Doug and Kay Sansom
Virginia Santoni
Marlene Sartipi
Malaysia Satterfield
Michael and Phyllis Saxon
Laura Schiller
James and Carla Schmit
Schooners Last Local Beach Club
Brandon Schrepf
Michael W. Schrepf
Lewis Schuessler
Susan Schuessler
Glenn Schulman
Juanita and Rodney Scott
Jean Seawell
Mary Seeley
Keith Shaver
Ken Shaver
Nancy Shaver
Margaret Sheridan
Sidelines Sports Bar & Restaurant
Natasha Simpson-Robinson
Jodi and Lori Skelton
Jerome and Anna Marie Skonieczny
Chandra Smiley
Josh Smith
Sam Smith
Scott Snowden
David Snyder
Michael Solliday
Emily Spears
Allison Spradlin
Brian Spruill
Marty Stanovich
Michael and Cindy Steltenkamp
Jon Stephenson
Still Waters Medical Spa
Amy Stoehr
Stonebrook Golf Club
Daniel Storey
Lourdes Tan
George Taylor, III
William Taylor
Team Brooks of Emerald Coast Realty
Theodore Terry
Dawn Thomas
Katherine Thomas
Debi Thompson
Titanium Wireless
Nancy Train Smith
Elrico Tunstall



\$100 TO \$499 CONTINUED

Nikki Ubaldini
Juan Valenciano
Rosa Valenciano
Patricia B. Valluzzi
Crysti Varden and Keith Varden
Geraldine Vaurigaud
Veterans Upward Bound
David and Sherill Villane
Paul and Debra Villane
Earley Vincent
Jane Vincent
Lisa A. Von Dyke
Brenda Wade
William and Elizabeth Walker
Walter Wallace
Warren Doors and Access Control
Lisa Warren
Roger and Pat Wattam
John and Viki Weir
Mary Welch
West Austin Properties, Inc.

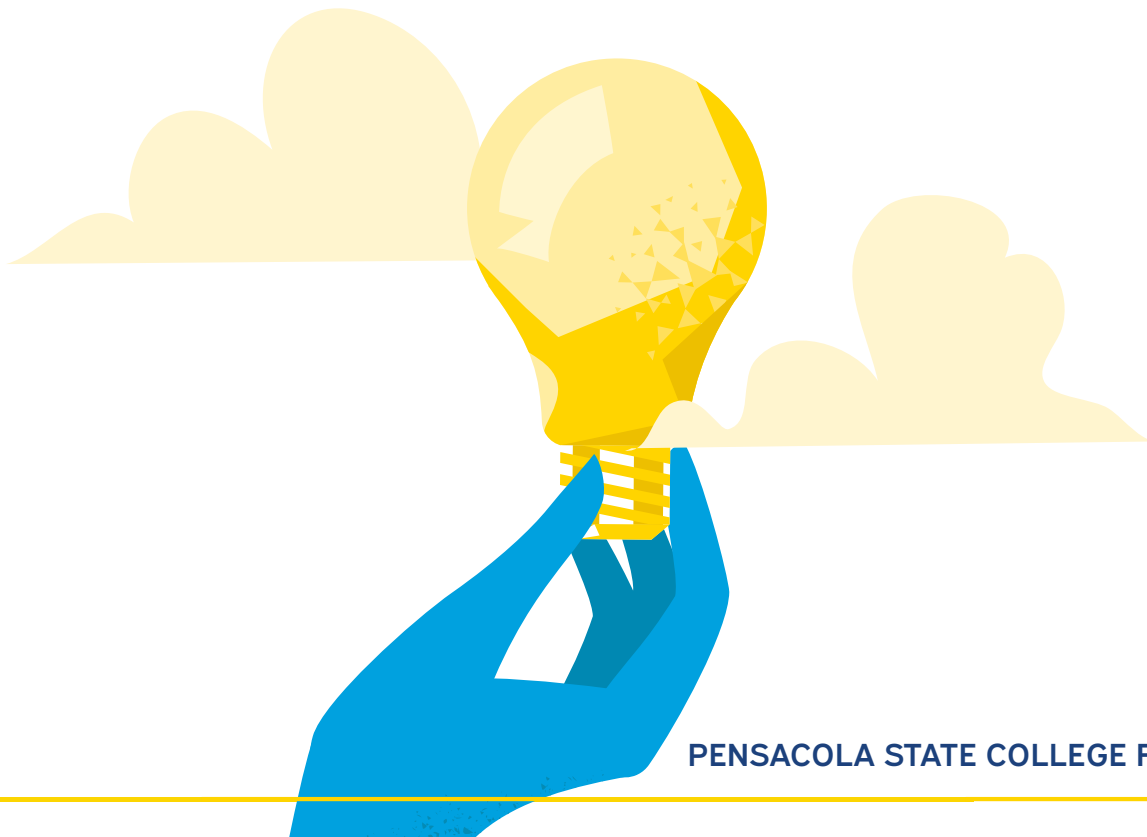
Rick and Celeste Whisenant
Jennifer Whitefoot
Tilden and Thapelo Whitfield
Julia Whiting
Warren B. Whitmore, Jr.
Paula Wiedemann
Brandon Wienke
Martha Wilder and Christopher Elmore
Haleigh Williams
Khaliah Williams
Nita M. Williams
Robert Williams
Sheryl A. Williams
Adam Williamson
Clare A. Willis
Wanda Willis
Kristin Wilson
Nichole Wilson
Tonya Wilson
Wade and Denise Wilson
Glenn Wiltshire

Candy Winter
Melissa Wolter
Tricia Woodburn
Greg and Tara Woodfin
Kimberly Woolf
Antoine Wright
Michael and Lori Yarbrough
Joseph and Susan Zayas
William A. Zimmern
Narla Zinerman
Dale and Sally Zorn

We thank our many donors who wished to remain anonymous. If we have inadvertently missed your name or you would like to have your name listed differently, please accept our apology and let us know by calling (850) 484-1560.



The Pensacola State College Alumni Association's matching scholarship program gives donors the opportunity to leave an endowed legacy to support PSC students into perpetuity. The PSC Alumni Association raises matching funds through various fundraising events. Once the Alumni Association has a signed letter of intent from an eligible donor that is approved for a \$12,500 match by the Alumni Association Board of Directors, they refer the donor to the Pensacola State College Foundation. The Foundation's Director of Scholarships works with the donor to craft the endowment paperwork and scholarship criteria. After establishment, the Director and their team maintain communication with the donor through annual reporting to create ever stronger relationships between the College and donors.



BUILDING SUCCESSFUL FOUNDATIONS: STRATEGIC PLAN 2025 - 2030

PILLAR 1:

GROWTH AND
DEVELOPMENT OF PSC

- Create and implement a strategic staffing plan.
- Develop a marketing and communications plan.
- Grow participation and resources.
- Determine campaign readiness.

PILLAR 2:

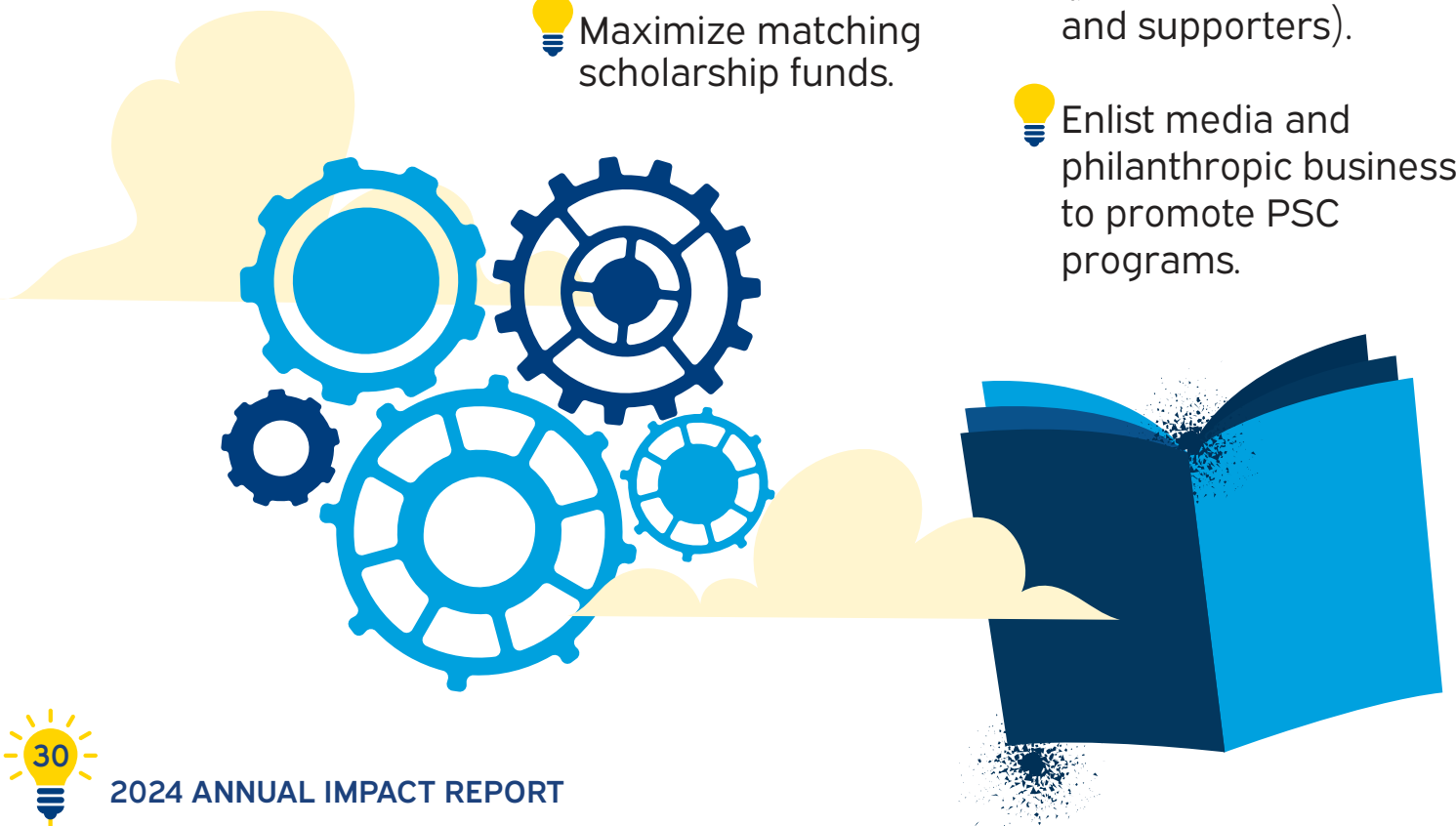
CHANGED LIVES
THROUGH AFFORDABLE,
QUALITY EDUCATION

- Increase funding for the Universal Scholarship.
- Recruit funding source for matches to encourage endowed scholarships.
- Establish new endowed scholarships annually.
- Encourage awarding of endowed teaching chairs.
- Maximize matching scholarship funds.

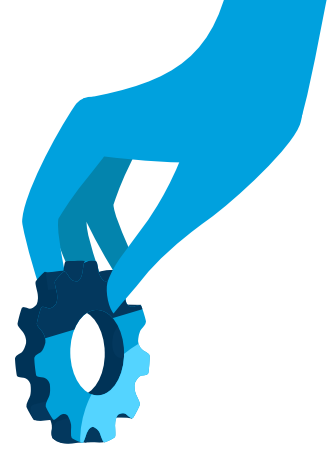
PILLAR 3:

ENHANCE THE
COLLEGE'S IMPACT

- Implement a board-driven advocacy and outreach plan.
- Increase the visibility of private support and key program impacts.
- Create and implement a co-promotion plan and packet for partners.
- Grow participation (partners, members, and supporters).
- Enlist media and philanthropic business to promote PSC programs.



2024 FINANCIAL OVERVIEW



Thanks to the generosity of cherished donors, the Pensacola State College Foundation ended the 2024 year with total assets of **\$49,159,087**. Approximately **\$23.4 million of this is expendable** and roughly **\$21.4 million of this is non-expendable**.

2024 OPERATING REVENUE	2024 OPERATING EXPENSES	2024 NET POSITION
CONTRIBUTIONS \$2,099,347	PROGRAMMATIC \$3,243,904	UNRESTRICTED \$2,099,347
IN-KIND \$1,847,828	MANAGEMENT & GENERAL \$746,911	EXPENDABLE \$23,399,775
OTHER \$286,339	FUNDRAISING \$367,146	NON-EXPENDABLE \$21,482,849

GROWTH IN KEY AREAS

9%
INCREASE IN
NET POSITION

14%
INCREASE IN
OPERATING REVENUE

56%
MORE EXPENDED ON
PSC PROGRAMS

FUNCTIONAL EXPENSES

74%
PROGRAM
SERVICES

17%
MANAGEMENT &
GENERAL

8%
FUNDRAISING





**1000 College Boulevard, Building 17
Pensacola, FL 32504**

Pensacola State College does not discriminate against any person on the basis of race, ethnicity, national origin, color, gender/sex, age, religion, marital status, pregnancy, disability, sexual orientation, gender identity, or genetic information in its educational programs, activities, or employment. For inquiries regarding Title IX and the College's nondiscrimination policies, contact the Executive Director, Institutional Equity and Student Conduct at (850)484-1759, Pensacola State College, 1000 College Boulevard, Pensacola, Florida 32504.